

HTS-9ar

SPECIFICATIONS

ENERGY EFFICIENT LED LIGHTING 70 to 100 watt Replacement

*UL & CUL rated, #E326977

*Made and Assembled in North America

Distributed by: LED Canada Lights, Mississauga, Ontario

FEATURED HIGHLIGHTS

- *Unlimited application possibilities due to RETROFITTING
- *Saves up to 79% of energy consumption
- *100,000 hour lifespan 5 Yr. Manufacturers registered warranty
- *Maintenance Free
- *Return on Investment between 18 and 40 months
- *Green Product

The HTS-9ar was specifically designed for wall packs, and decorative lighting retrofits. Its superior heat management and compact design make it ideal for retrofitting in existing fixtures for 10+ years of maintenance free service.

ENVIRONMENTAL FEATURES

- *Contains no Mercury or Lead
- *Does not produce UV Rays
- *Does Not Attract Insects
- *Directional Light means No Light Pollution

ELECTRICAL SPECIFICATIONS

- *47 to 63 Hertz ac line power voltage from 90 VAC RMS to 277 VAC RMS
- *available to 480 VAC
- *nominal operating efficiency is 85% typical at 230VAC and maximum load
- *Driver provides surge protection at 305 VAC
- *Power distributed to onboard drivers per six LED lights

OUTPUT SPECIFICATIONS

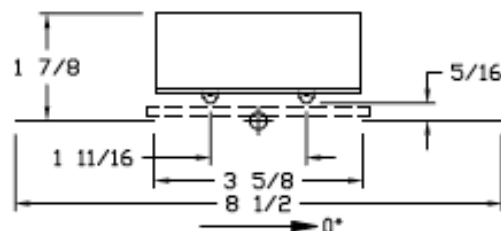
- *Cree Inc XP-G XLamp LED
- *Number of Lights 12
- *Source Power 29 watts
- *CRI 74
- *Lumens 2533 at 100%
- *Efficacy 81.85 Lm/W
- *Chromaticity: White Light 5823k
- *Junction Temperature <60°C
- *IESNA Tested LM79 & LM80
- *Operating Range of -30°C TO 70°C
- *Nominal Lumens per watt 180
- *EMC: Compliant to 47 CFR, Part 2, 15

ASSEMBLY

- *Metal Core Board
- *One piece aluminum heat sink dissipates heat
- *Vibration resistant
- *ASTM and NEMA Tested

DIMENSIONS

7.25" x 3.625" x 1.50"



APPLICATIONS

- *Wall Packs
- *High Bay Fixtures
- *Parking Garages
- *Parking Lots
- *Gas Station Canopies