

# HTS-9aar

# SPECIFICATIONS

## ENERGY EFFICIENT LED LIGHTING 70 watt Replacement

\*UL & CUL rated, #E326977

\*Made and Assembled in North America

Distributed by: LED Canada Lights, Mississauga, Ontario

### FEATURED HIGHLIGHTS

- \*Unlimited application possibilities due to RETROFITTING
- \*Saves up to 79% of energy consumption
- \*100,000 hour lifespan 5 Yr. Manufacturers registered warranty
- \*Maintenance Free
- \*Return on Investment between 18 and 40 months
- \*Green Product

The HTS-9aar was specifically designed for spot and decorative lighting retrofits.

Its superior heat management and compact design make it an ideal 10+ year retrofit in existing fixtures commonly found in these environments.

### ENVIRONMENTAL FEATURES

- \*Contains no Mercury or Lead
- \*Does not produce UV Rays
- \*Does Not Attract Insects
- \*Directional Light means No Light Pollution

### ELECTRICAL SPECIFICATIONS

- \*47 to 63 Hertz ac line power voltage from 90 VAC RMS to 277 VAC RMS
- \*available to 480 VAC
- \*nominal operating efficiency is 85% typical at 230VAC and maximum load
- \*Driver provides surge protection at 305 VAC
- \*Power distributed to onboard drivers per six LED lights

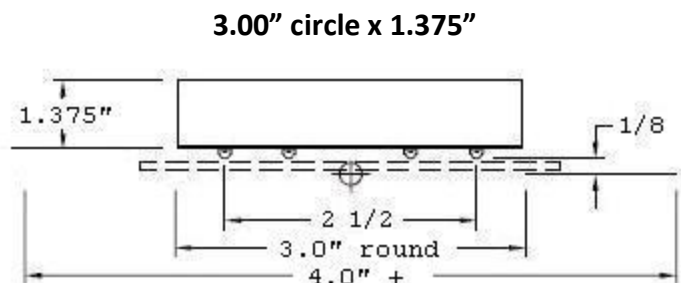
### OUTPUT SPECIFICATIONS

- \*Cree Inc XP-G XLamp LED
- \*Source Power 16 watts
- \*Number of Lights 6
- \*CRI 74
- \*Lumens 1266 at 100%
- \*Efficacy 81.82 Lm/W
- \*Chromaticity: White Light 5823k
- \*Junction Temperature <60°C
- \*IESNA Tested LM79 & LM80
- \*Operating Range of -30°C TO 70°C
- \*Nominal Lumens per watt 180
- \*EMC: Compliant to 47 CFR, Part 2, 15

### ASSEMBLY

- \*Metal Core Board
- \*One piece aluminum heat sink dissipates heat
- \*Vibration resistant
- \*ASTM and NEMA Tested

### DIMENSIONS



### APPLICATIONS

- \*Decorative
- \*Low Bay
- \*Garages
- \*Parking Lots
- \*Spot Lighting